

**Environment (Wales) Act 2016 Part 1 – Section 6  
The Biodiversity and Resilience of Ecosystems Duty**

**Reporting on Section 6 –  
Cyngor Cymuned Llanddewi Brefi  
Llanddewi Brefi Community Council**

**Name of Town or Community Council:**

**Cyngor Cymuned Llanddewi Brefi, Llanddewi Brei Community Council.**

### **Introduction and Context**

**Llanddewi Brefi Community Council promote sustainability and biodiversity by perusing sustainability goals and sustainable practices whenever possible:**

- **Furthermore, the Council consists of 10 elected volunteer Councillors, and an employed Clerk, representing approximately 640 residents in the village and surrounding community (2011 Census data). The Council provides a range of services within the community, with a precept of £8500 ( based on the 2022-2023 figures) In addition to granting funds for projects in the Council's area from the precept, additional grant funding has been sought for funding a variety of projects and improvements within the village, inclusive of a joint venture with the Llanddewi Brefi Community Hall and Recreation Ground Charity and other Community groups, during the Autumn 2022 to hold initial consultations to create a plan and funding bid for a Community Wildlife Garden, to be created in a small area of the Recreation grounds; this has now been approved by the Charity and representatives from the Council and Community groups will now be carrying out the works in the coming Spring(2023)**
- **Some of these services have an impact on biodiversity, however before discussing these further to illustrate what has been achieved (alongside issues identified and actions for improvement) the following section provides a brief area description and context within which the Council currently carries out its biodiversity remit.**

#### **Llanddewi Brefi- Conservation Village in the heart of the Cambrian Mountains:**

- ***The village of Llanddewi Brefi in Ceredigion is the focal point of the community, which mainly follows the boundaries of the former parish of Llanddewi Brefi, one of the largest in rural Wales. This historical village, of religious significance dating back to the 7th century, is nestled in the foothills of the Cambrian Mountains at the intersection of several valleys giving the village its unique layout.***
- ***It is an area of extraordinary natural beauty, with footpaths along the old Drovers lanes, local rivers and up into the Cambrian Mountains with the surrounding countryside, reflecting a mosaic of the typical 'Rhos' pastures,***

***riparian corridors of beech, ash, hazel and oak and upland hill farm grazing semi-improved pasture. for Ceredigion. Species typical of the area include the rare Marsh Fritillary butterfly, slow worms, wildfowl and waders in addition to being a stronghold for the Red Kite and other birds of prey.***

- ***A large part of the village is also having 'Conservation Zone' status (under Article 4 direction) conferring protected status not only to the built heritage of buildings within this zone, but also extending to boundaries comprising of dry-stone walling, hedgerows and trees, along with other heritage green spaces such as the 'Drovers Pen' and 'Pound Garden'. The Council has responsibilities to maintain the latter, in addition to managing grass cutting contracts for the Cemetery, Church Yard, Recreation Grounds. The Council also has oversight and maintenance of numerous footpaths within the village, i.e., Pyn farch lane, Old Vicarage Lane. Residents using these footpaths have informally reported the presence of bats(pipistrelles), tawney owls, greater spotted woodpeckers, hedgehogs and red kites using trees and land features associated with these lanes(footpaths), amongst numerous invertebrates and pollinator species.***
- ***The Council as sole trustee to Llanddewi Hall and Recreation Ground Charity, also works closely with the Charity committee to enable up keep and maintenance of the recreation grounds, children's play area and car park area, in addition to the Neuadd (old hall) and other hall buildings. In addition, at the back of the football ground, is located an area (approximately 0.2 Ha), previously planted with larch and conifer species, which was clear-felled in late 2018, due to disease.***
- ***The Llanddewi Hall and Recreation Grounds Charity have subsequently resolved to leave this area to 'rewild', after observing native flora, mammals and invertebrates have been returning to this habitat, which effectively acts as a green corridor to surrounding fields and adjoining hedgerows.***

## Action Report

Action carried out to:		Monitored by:
<p>-embed biodiversity into decision making &amp; procurement</p>	<p>Llanddewi Brefi Community Council (LBCC) considers biodiversity and how it can reduce it's at all levels during decision making and procurement by using local companies/ services and sustainable/ recycled materials where appropriate in regards to carrying out the following activities and/or services:</p> <p><u>1.Council Meetings, Awareness Session's and Events</u></p> <p>a) Following on from remote hosting of meetings, during the pandemic, the Council continues to enable the ability for councillors/ speakers to attend meetings remotely, helping not only to provide hybrid access but also contributing to reduction in carbon emissions for those attendees living/working remotely, who would normally travel to meetings by car.</p> <p>b) The capacity described above has now been expanded with the addition of an interactive digital/white board/facility at the hall, secured as part of a successful funding bid made by the Council to secure grant funding via Cynnal a Cardi LEADER programme, during the early part of 2022. This has resulted in a considerable reduction in paper/printing of documentation required for meetings, as relevant meeting documentation can now be displayed using the white screen.</p>	<p>Commitments made in Meetings, documentation and reports.</p>

	<p>c) The decision to apply for grant funding of the digital /IT facility has also increased the ability of a wider range of activities to take place within the community, whilst also expanding the capacity of existing Community Centre facility( of which the Council is sole trustee) to offer a IT provision to areas in the nearby vicinity: in brief it has encouraged a greater number of community groups to make better use of the Community Hall for hosting meetings and guest speaker presentations to their groups.</p> <p>d) Groups have also had access to a Gro-Pro camera and mast (part of the new provision) to enable data capture, mapping and recording of events/activities.</p> <p><u>2.Llanddewi Brefi Village Hall and Recreation Grounds:</u></p> <p>The Council as sole trustee of the Llanddewi Brefi Community Hall and Recreation Ground Charity, regards decisions concerning material and operational changes regarding the running and proposed improvements to the hall (and grounds) as being subject to all Section 6 considerations with respect to incorporating biodiversity at all decision-making levels, e.g.</p> <p>e) It is anticipated that by marketing the new digital facilities within the hall to enable use from other nearby community groups in the area, that potentially greater revenue in hall hire fees could be generated.</p>	
--	-----------------------------------------------------------------------------------------------------------------------------------------------------------------------------------------------------------------------------------------------------------------------------------------------------------------------------------------------------------------------------------------------------------------------------------------------------------------------------------------------------------------------------------------------------------------------------------------------------------------------------------------------------------------------------------------------------------------------------------------------------------------------------------------------------------------------------------------------------------------------------------------------------------------------------------------------------------------------------------------------------------------------------------------------------------------------------------------------------------------------------------------------------------------------------------------------------------------------------------------------------------------------------------------------------------------------------------------------------------------------------------------------	--

	<p>f) The new equipment enables not only an expanded capacity to hold hybrid/remote meetings but also contributes to the long-term sustainability of the hall/ grounds, by providing better facilities, which have begun to attract new users (in addition to existing)</p> <p>g) Following on from the last point, new users potentially contribute to funding future improvements to the building fabric and operational costs of the Community Hall Buildings, (in addition to the present-day carbon cost reductions afforded by energy produced by the Community Hall Solar photovoltaic roof panels</p> <p><u>3. Clerk's Office</u></p> <p>h) Correspondence/reporting is produced electronically, wherever possible.</p> <p>i) Paper/stationary used when needed is sourced from the Woodland Trust, or FSC certified sources.</p> <p>j) Printer cartridges are recycled using the manufacturer's programme.</p> <p>k) All packaging with deliveries is reutilised in outbound packages, or recycled.</p> <p>l) Distribution of correspondence/community notices: Made by e- mail/one drive links or via the community website.</p>	<p>Evidence, feedback, reports, invoicing and supporting documentation from the Clerk.</p> <p>Consideration of biodiversity demonstrated in</p>
--	--------------------------------------------------------------------------------------------------------------------------------------------------------------------------------------------------------------------------------------------------------------------------------------------------------------------------------------------------------------------------------------------------------------------------------------------------------------------------------------------------------------------------------------------------------------------------------------------------------------------------------------------------------------------------------------------------------------------------------------------------------------------------------------------------------------------------------------------------------------------------------------------------------------------------------------------------------------------------------------------------------------------------------------------------------------------------------------------------------------------------------------------	-------------------------------------------------------------------------------------------------------------------------------------------------

	<p>m) In addition, all documentation for meetings is now presented using the clerk's laptop and the interactive screen at the Hall, saving on paper and printing costs/resources.</p> <p><u>4.Planning Applications and Associated matters:</u></p> <p>n) The Council takes into account biodiversity when considering planning applications and other associated matters (footpaths, neighbourhood service matters, woodland creation plans, renewable energy and telecommunications development applications)</p> <p>o) Developing adaptation and mitigation responses to the impacts of climate change, i.e., evaluating and implementing better responses to localised flooding via potential use of SuDs strategies within the parish.</p>	<p>decisions on planning applications, evaluation of and responses facilitated/given regarding public consultations concerning green energy/woodland development and telecommunications applications in the locality.</p>
-raise awareness of biodiversity & its importance	Llanddewi Brefi Community Wildlife Garden Project (LBCG) Planning stage Oct- Nov 2022 Implementation Mar 2023	Documentation from Consultation and Plan/Meetings. (Plan of scheme in Appendix below)
-safeguard principal species and habitats	Llanddewi Brefi Community Wildlife Garden Project (LBCG) as described above.	As per previous comment)
-restore & create habitats and resilient ecological networks	The LBCG project is a first step to show how this could be achieved in previously less well connected/ biodiverse areas within the village over	As last section

	which the Council has a duty to maintain.	
-tackle negative factors: for e.g., reduce pollution, use nature-based solutions, address invasive species	No formal survey has been undertaken to date to monitor the presence of non-native species at the Village Hall and Recreation grounds, or in the parish as a whole; it is recognised that this should be addressed, in addition to acting appropriately concerning the former, should reports/complaints be received by the Council	Commitments made in Meetings, documentation and reports
-use improve and share evidence	Community planning events- planning, funding bid brought groups together- plan to raise awareness of actions, habitat creation and no mow policies coming summer- 2023.	As per last section
-support capacity and/or other organisations	Worked with Local Nature Forum, Clwb Ffrindiau to plan the LBCG.	As per last section

### **Review of s6 duty**

- What has worked well?
- Embarking on grant funding bids to enable embedding further sustainable measures to be provided within the existing community facilities.
- The latter also facilitated a local group with the Council to consult and plan to create the Community Wildlife garden; the latter will greatly enhance biodiversity and provide a green corridor to the new 'rewilded' area associated with the Llanddewi Village Hall and Recreation grounds and surrounding hedgerows/ fields.
- It is anticipated that this will create an accessible interlinking set of wildflower meadow, community orchard and grassland habitat areas for the community to enjoy and provide a model to raise awareness of how similar approaches could be used to further enhance biodiversity within the village.
- What have the barriers been?
- Lack of expertise to identify changes needed or best practice.
- What will you change?
- Work with the Local places for Nature Officer and the Local Environmental records centre to seek advice to help identify further potential areas to enable



joining up of fragmented habitats and increase biodiversity both within green and/or heritage areas spaces under the Council's remit.

- Also continue to work with the Local Nature forum and other interested parties to develop LBCG and new habitat enhancement projects in the parish.
- How and when will the s6 duty be monitored and the s6 plan reviewed?
- The duty will be monitored through the Biodiversity Sub Task Committee of the Council, with individual officers reporting back to the Council on the success or otherwise of the actions taken through, monthly and annual inspections.
- The s6 plan will be reviewed in the light of these reports and any other evidence or information that is made available to the Council. At the time of this report's publication, there is no specific time or date set for the plan to be reviewed, but this will be done within the next six months and a regular review interval agreed thereafter.

# Appendix One:

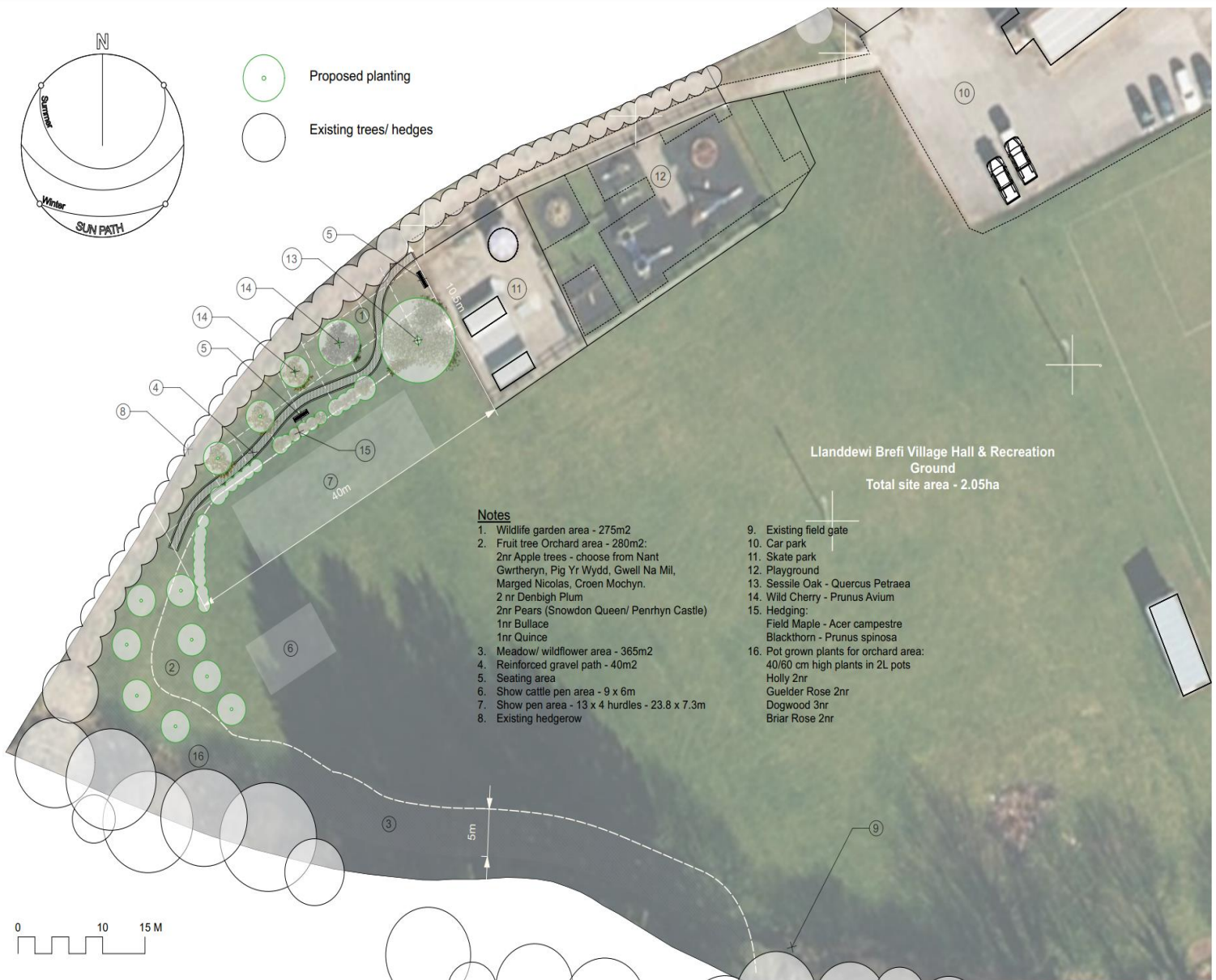


Figure 1 :Plan for Llanddewi Brefi Community Garden : Agreed November 2022